

QUITAR

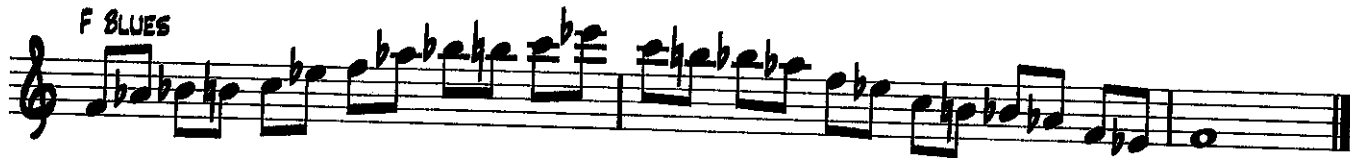
RSS ALL-COUNTY JAZZ ENSEMBLE REQUIRED SCALES

PLAY SWING 1/2s.

C BLUES



F BLUES



Bb BLUES



GUITAR
SCORE

SOLO ETUDE
ANTHROPOLOGY GUITAR COMPING EXAMPLE

CHARLIE PARKER

RSS ALL-COUNTY JAZZ ENSEMBLE

5 B^b6 G^7 C^{min7} F^7 D^{min7} G^7 C^{min7} F^7

9 B^b6 $G^7(b9)$ C^{min7} $F^7(b9)$ D^{min7} $G^7(b9)$ C^{min7} $F^7(b9)$

13 B^b6 B^b13 E^b6 E^o7 C^{min7} $F^7(b9)$ $F^7(b9)$ B^b6

17 D^9sus D^9 G^9sus G^9

21 C^9sus C^9 F^9sus F^9 $F^7(b9)$

25 B^b6 $G^7(b9)$ $F^{13}sus$ $F^{13}(b9)$ D^{min7} $G^7(b9)$ C^{min7} $F^{13}(b9)$

29 B^b6 $B^b7(b5)$ E^bMAJ^7 E^o7 C^{min9} $F^{13}(b9)$ B^b6